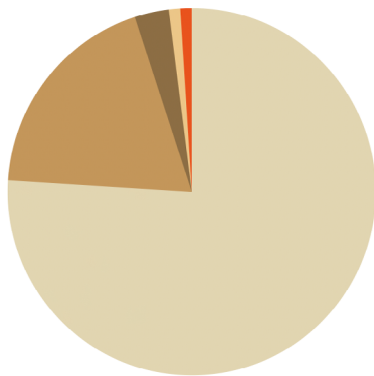
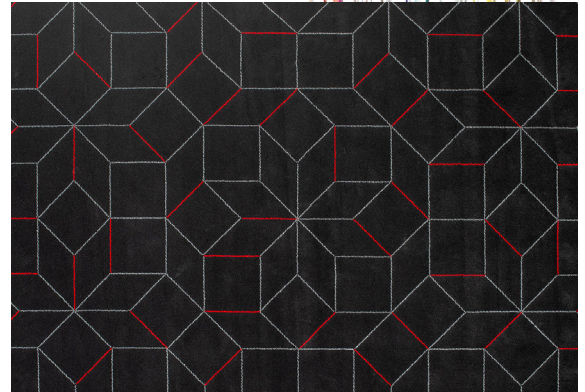


# CSrugs.

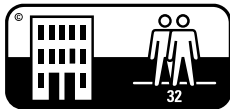
## BYZANCE (16, 45 MM)



- Yarns | 76%**  
New Zealand wool (worsted yarn)
- Coating | 19%**  
Latex
- Backing | 3%**  
PP/PES/Jute
- Finishing | 1%**  
Cotton tape
- Branding | 1%**  
CSrugs label



CSrugs.



## MAINTENANCE

- It is important to vacuum your rug at least once a week to prolong its durability.
- A new rug will produce fluff, but this is temporary. This fluff does not affect the quality of your rug.
- The ideal air humidity for wool is around 50%. Please note that if the air humidity is below 50%, the material becomes dry and its natural elasticity will decrease.
- In order to prevent wool from drying out, we recommend misting your woollen rug with water regularly.
- In order to prevent heavy use on one particular location, we recommend turning your rug around once in a while.
- Due to our use of natural materials, slight colour differences may occur.
- We offer personal maintenance advice via [www.james.eu](http://www.james.eu)

## PACKAGING & LOGISTICS

The packaging is exactly tailored for each product, using a minimal amount of packaging material. Moreover in this way the product is optimally packed and well protected during transport. The carriers that collaborate with CSrugs give, just as CSrugs, high priority to durability.

They aim at reducing the CO<sub>2</sub>-emissions through, among others, the use of cleaner engines (EURO VI), the effort in reducing fuel consumption, optimizing the loading space and optimal planning.

## RE-USE

CSrugs aims for a sustainable economy in which materials are reused as much as possible in order to limit CO<sub>2</sub>-emissions. We do this by re-using our yarns, recycling waste materials and producing high-quality rugs with longevity.

CSrugs manufactures made to order-based. Due to customized purchasing, residual materials have been kept to a minimum.

## LOCALLY MADE PRODUCTS

CSrugs produces (machine tufted) all its rugs in its own production locations in Asten, the Netherlands.

## WARRANTY

Sustainable production involves limiting CO<sub>2</sub> emissions. CSrugs produces all its rugs in its own production locations in Asten, the Netherlands.

## EXTRA DETAILS

- Netto tufted shapes and design (no waste)
- Maximum size without seams: 460 x 480 cm
- Own configurator
- 7 standard colours
- Customized colour available

